

| GRUPPE | GE- WICHT | GRÖSSE DN | WERKSTOFFE | GEWINDE/ KUPPLUNG | BESTELL- NUMMER |
|---------|-------------------|--------------|------------|----------------------|--------------------|
| 3 | Weight Approx. | Size DN | Materials | Thread / Coupling | Part Number |
| Section | ≈ kg | mm in. | | AG / K | Type |



| | | | | | |
|------|-----|----|---|-----|-------------|
| 2,90 | 50 | 2" | Messing GD 5/2" = NBR 1) | G 2 | KWZ 2" |
| 2,95 | 80 | 3" | — brass GD 5/2" = NBR 1) | G 3 | KWZ 3" |
| 2,85 | 100 | 4" | — brass GD 5/2" = NBR 1) | G 4 | KWZ 4" |
| 1,05 | 50 | 2" | Aluminium GD 5/2" = NBR 1) | G 2 | (KWZ 2" Al) |
| 0,96 | 80 | 3" | — aluminium GD 5/2" = NBR 1) | G 3 | KWZ 3" Al |
| 0,97 | 100 | 4" | — aluminium GD 5/2" = NBR 1) | G 4 | KWZ 4" Al |
| 2,60 | 50 | 2" | Edelstahl 1.4401 GD 5/2" = PTFE | G 2 | KWZ 2" SS |
| 2,55 | 80 | 3" | — stainless steel AISI 316 GD 5/2" = PTFE | G 3 | KWZ 3" SS |
| 2,40 | 100 | 4" | — stainless steel AISI 316 GD 5/2" = PTFE | G 4 | KWZ 4" SS |

- 1) Sonderdichtungen GD 5/2" aus Hypalon®, Polyurethan, Viton® oder Thermopac siehe umseitig.
Special seals GD 5/2" of CSM, polyurethane, FKM or Thermopac see overleaf.
- 2) Sonderausführung KWZ mit Rundgewinde-Schlauchanschluss nach DIN 405 siehe umseitig.
Special type KWZ with hose connection with knuckle thread acc. to DIN 405 see overleaf.

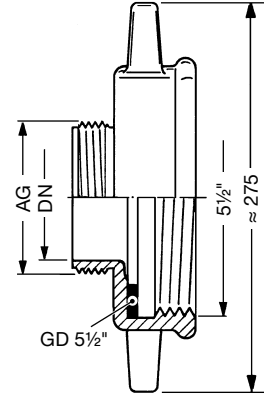
Kesselwagen-Zwischenstücke Type **KWZ**, einerseits Eisenbahn-Kesselwagengewinde 5/2" nach DIN 3799/DIN 26017 mit einliegender Dichtung GD 5/2" lt. Tabelle, andererseits Schlauchanschluss wie abgebildet.

Rail car adapter type **KWZ**, one end with rail car thread 5/2", (Whitworth/DIN 3799/DIN 26017) with captive seal GD 5/2", other end hose connection as shown.

KWZ

mit Außengewinde nach DIN EN ISO 228 mit stirnseitiger Dichtfläche 2)

with ext. pipe thread acc. to EN ISO 228 (BSP parallel) with flat sealing surface 2)

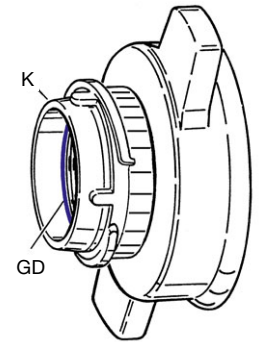


| | | | | | |
|------|-----|----|--|-----------|-----------------|
| 3,26 | 50 | 2" | Messing GD 5/2" = NBR 1) GD = Polyurethan | VK 50 | KWZ x VK 50 |
| 3,70 | 80 | 3" | — brass GD 5/2" = NBR 1) GD = polyurethane | VK 80 | KWZ x VK 80 |
| 3,95 | 100 | 4" | — brass GD 5/2" = NBR 1) GD = polyurethane | VK 100 | KWZ x VK 100 |
| 1,22 | 80 | 3" | Aluminium aluminium | VK 80 Al | KWZ x VK 80 Al |
| 2,91 | 50 | 2" | Edelstahl 1.4401 GD 5/2" / GD = PTFE | VK 50 SS | KWZ x VK 50 SS |
| 3,28 | 80 | 3" | — stainless steel AISI 316 GD 5/2" / GD = PTFE | VK 80 SS | KWZ x VK 80 SS |
| 3,55 | 100 | 4" | — stainless steel AISI 316 GD 5/2" / GD = PTFE | VK 100 SS | KWZ x VK 100 SS |

KWZ - VK

mit VK-Kupplung nach DIN EN 14420-6

with VK coupling acc. to EN 14420-6

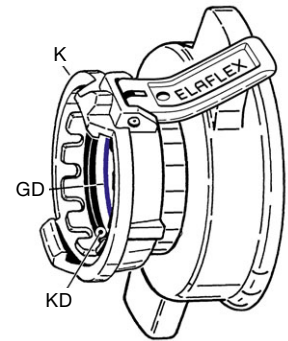


| | | | | | |
|------|-----|----|--|-----------|-----------------------|
| 3,63 | 50 | 2" | Messing GD 5/2" / KD = NBR 1) GD = Polyurethan | MK 50 | KWZ x MK 50-45° |
| 4,50 | 80 | 3" | — brass GD 5/2" / KD = NBR 1) GD = polyurethane | MK 80 | KWZ x MK 80-32° |
| 5,60 | 100 | 4" | — brass GD 5/2" / KD = NBR 1) GD = polyurethane | MK 100 | KWZ x MK 100 |
| 1,55 | 80 | 3" | Aluminium aluminium | MK 80 Al | KWZ x MK 80 Al |
| 3,29 | 50 | 2" | Edelstahl 1.4401 GD 5/2" / GD = PTFE KD = CSM | MK 50 SS | KWZ x MK 50-45° SS 3) |
| 4,0 | 80 | 3" | — stainless steel AISI 316 GD 5/2" / GD = PTFE KD = CSM | MK 80 SS | KWZ x MK 80-45° SS 3) |
| 5,15 | 100 | 4" | — stainless steel AISI 316 GD 5/2" / GD = PTFE KD = CSM | MK 100 SS | KWZ x MK 100 SS 3) |

KWZ - MK

mit MK-Kupplung nach DIN EN 14420-6, kurze Ausführung

with MK coupling acc. to EN 14420-6, short type



Lange Sonderausführung mit Standardhebel umseitig.

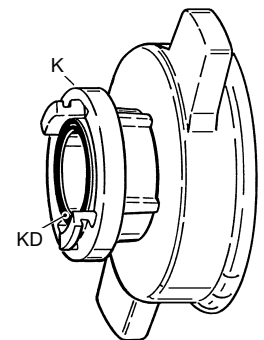
- 3) Long special type with standard lever see overleaf.

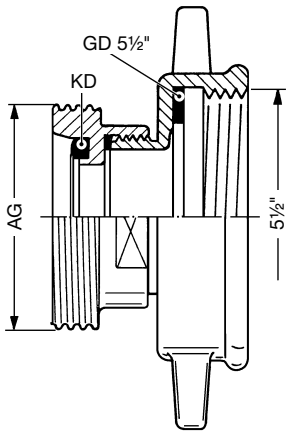
| | | | | | |
|------|-----|----|--|------------|------------------|
| 3,53 | 50 | 2" | Messing GD 5/2" / KD = NBR 1) GD = Polyurethan | Storz C | KWZ x Storz C |
| 4,11 | 80 | 3" | — brass GD 5/2" / KD = NBR 1) GD = polyurethane | Storz B | KWZ x Storz B |
| 5,05 | 100 | 4" | — brass GD 5/2" / KD = NBR 1) GD = polyurethane | Storz A | KWZ x Storz A |
| 1,32 | 50 | 2" | Aluminium GD 5/2" / KD = NBR 1) GD = Polyurethan | Storz C Al | KWZ x Storz C Al |
| 1,36 | 80 | 3" | — aluminium GD 5/2" / KD = NBR 1) GD = polyurethane | Storz B Al | KWZ x Storz B Al |
| 1,88 | 100 | 4" | — aluminium GD 5/2" / KD = NBR 1) GD = polyurethane | Storz A Al | KWZ x Storz A Al |
| 3,25 | 50 | 2" | Edelstahl 1.4401 GD 5/2" / GD = PTFE KD = FKM | Storz C SS | KWZ x Storz C SS |
| 4,15 | 80 | 3" | — stainless steel AISI 316 GD 5/2" / GD = PTFE KD = FKM | Storz B SS | KWZ x Storz B SS |
| 4,70 | 100 | 4" | — stainless steel AISI 316 GD 5/2" / GD = PTFE KD = FKM | Storz A SS | KWZ x Storz A SS |

KWZ - Storz

mit Storz-Festkupplung nach DIN

with Storz coupling according to DIN





Type KWZ-SS

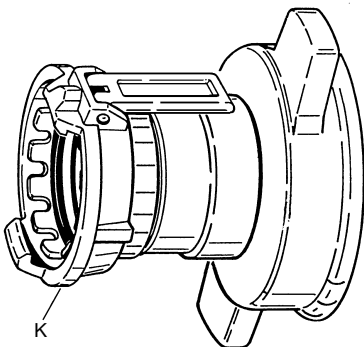
Kesselwagen-Zwischenstücke Type **KWZ-SS** wie umseitig beschrieben, jedoch in **Sonderausführung mit Rundgewinde** n. DIN 405, aus Edelstahl. Mit eingelegter Kupplungsdichtung **KD** aus Viton®. Dichtung **GD 5 1/2"** aus Viton® oder nach Wunsch.

*Rail car adapters type **KWZ-SS** as described overleaf, **special design with knuckle thread** according to DIN 405 in stainless steel. With captive coupling seal **KD** of FKM. **GD 5 1/2"** seal of FKM or as requested.*

| GEWINDE Thread Size AG | BESTELLNUMMER Part Number Type |
|------------------------------|--------------------------------------|
| Rd 78 x 1/6 | KWZ x 78 SS *) |
| Rd 95 x 1/6 | (KWZ x 95 SS) |
| Rd 110 x 1/4 | (KWZ x 110 SS) |
| Rd 130 x 1/4 | (KWZ x 130 SS) |

*) Gehört nach DIN 14555 zur Standardausrüstung von Gefahrgut-Gerätewagen der Feuerwehr.

*) According to DIN 14555 this is standard on fire brigade trucks for handling dangerous goods.

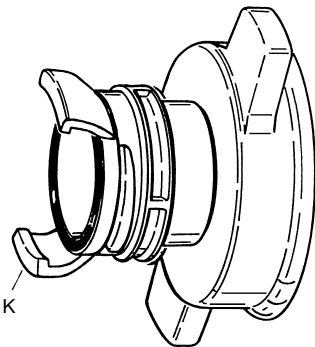


Type LKWZ-MK ... SS

Kesselwagen-Zwischenstücke Type **LKWZ-MK** aus Edelstahl, wie umseitig beschrieben, jedoch in **verlängerter Sonderausführung**, so dass sich der Standardhebel der MK-Kupplung ganz umklappen und arretieren läßt.

*Rail car adapters type **LKWZ-MK** of stainless steel, as described overleaf, but **extended special type** allowing standard lever of MK coupling to be entirely folded back and arrested.*

| KUPPLUNG Coupling K | BESTELLNUMMER Part Number Type |
|---------------------------|--------------------------------------|
| MK 50 SS | LKWZ x MK 50 SS |
| MK 80 SS | LKWZ x MK 80 SS |
| MK 100 SS | LKWZ x MK 100 SS |



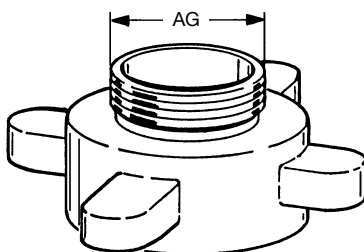
Type KWZ-Guillemin

Kesselwagen-Zwischenstücke Type **KWZ** aus Messing, Aluminium oder Edelstahl, mit aufgedichteter Guillemin-Kupplung nach DIN EN 14420-8 mit Arretierung und einliegender Kupplungsdichtung **KD** aus NBR. Gewindedichtung **GD** aus Polyurethan. Andere Dichtungswerkstoffe siehe Seite 387.

*Rail car adapters type **KWZ** in brass, aluminium or stainless steel, with sealed-on Guillemin coupling according to EN 14420-8 with arrest and captive coupling seal **KD** of NBR and thread seal **GD** of polyurethane. Other sealing material see page 387.*

| KUPPLUNG Coupling K | BESTELLNUMMER Part Number Type |
|---------------------------|--------------------------------------|
| GK 80 | KWZ x GK 80 |
| GK 100 | KWZ x GK 100 |
| GK 80 Al | KWZ x GK 80 Al |
| GK 100 Al | KWZ x GK 100 Al |
| GK 80 SS | KWZ x GK 80 SS |
| GK 100 SS | KWZ x GK 100 SS |

Kleinere KWZ-Typen Smaller KWZ types



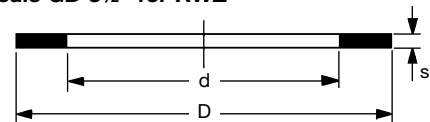
Kesselwagen-Zwischenstücke wie umseitig beschrieben, jedoch in Sonderausführung für alte Eisenbahn-Kesselwagen mit kleinerem Auslaufstutzen:

DN 50 = 3 1/4" nach DIN 6602 (alte DIN 11) (äuß. Ø 82,5 mm) AG = 2"
DN 80 = 4 1/2" nach DIN 6602 (alte DIN 11) (äuß. Ø 114,3 mm) AG = 3"

Rail car adapters as described overleaf, but special type for old rail cars with smaller outlets:

DN 50 (2") = 3 1/4" according to old DIN 11 (OD 82,5 mm) AG = 2"
DN 80 (3") = 4 1/2" according to old DIN 11 (OD 114,3 mm) AG = 3"

Sonderdichtungen GD 5 1/2" für KWZ Special Seals GD 5 1/2" for KWZ



| WERKSTOFFE Materials | ABMESSUNGEN Dimensions | | | BESTELLNUMMER Part Number Type |
|-------------------------|---------------------------|-----|---|--------------------------------------|
| | D | d | s | |
| NBR | 140 | 102 | 6 | PD 5 1/2" |
| CSM | 140 | 102 | 5 | HYD 140 / 102 |
| Polyurethan/PU | 140 | 102 | 3 | VD 140 / 102 |
| Viton®/FKM | 140 | 102 | 3 | ViD 140 / 102 |
| PTFE | 140 | 102 | 3 | TD 140 / 102 |
| Thermopac/HBD | 140 | 102 | 3 | HBD 140 / 102 |